

**19 NOVEMBER 2024 7:30**

# **WASTED OPPORTUNITIES:** HOW TO MAXIMISE GAINS IN LOWER LIMB CARE

**DR LEANNE ATKIN**







WOUND CARE TODAY

# LIVE Q&A

SEND IN YOUR QUESTIONS BY  
COMMENTING ON THE VIDEO



# what?



WOUND CARE TODAY



People.Health.Care.



# How?



WOUND CARE TODAY



People.Health.Care.



# why?



WOUND CARE TODAY



People.Health.Care.

**What?**  
**wasted opportunities**  
**can be found in lower**  
**limb care?**



WOUND CARE TODAY



People.Health.Care.

# THREE FUNDAMENTALS OF CARE OUTCOMES



WOUND CARE TODAY



People.Health.Care.



# ***THREE FUNDAMENTALS OF CARE OUTCOMES***



WOUND CARE TODAY



People.Health.Care.



# 1 Prevent



WOUND CARE TODAY



PeopleHealthCare.

# HOW OFTEN DO YOU SEE A PATIENT LIKE THIS?

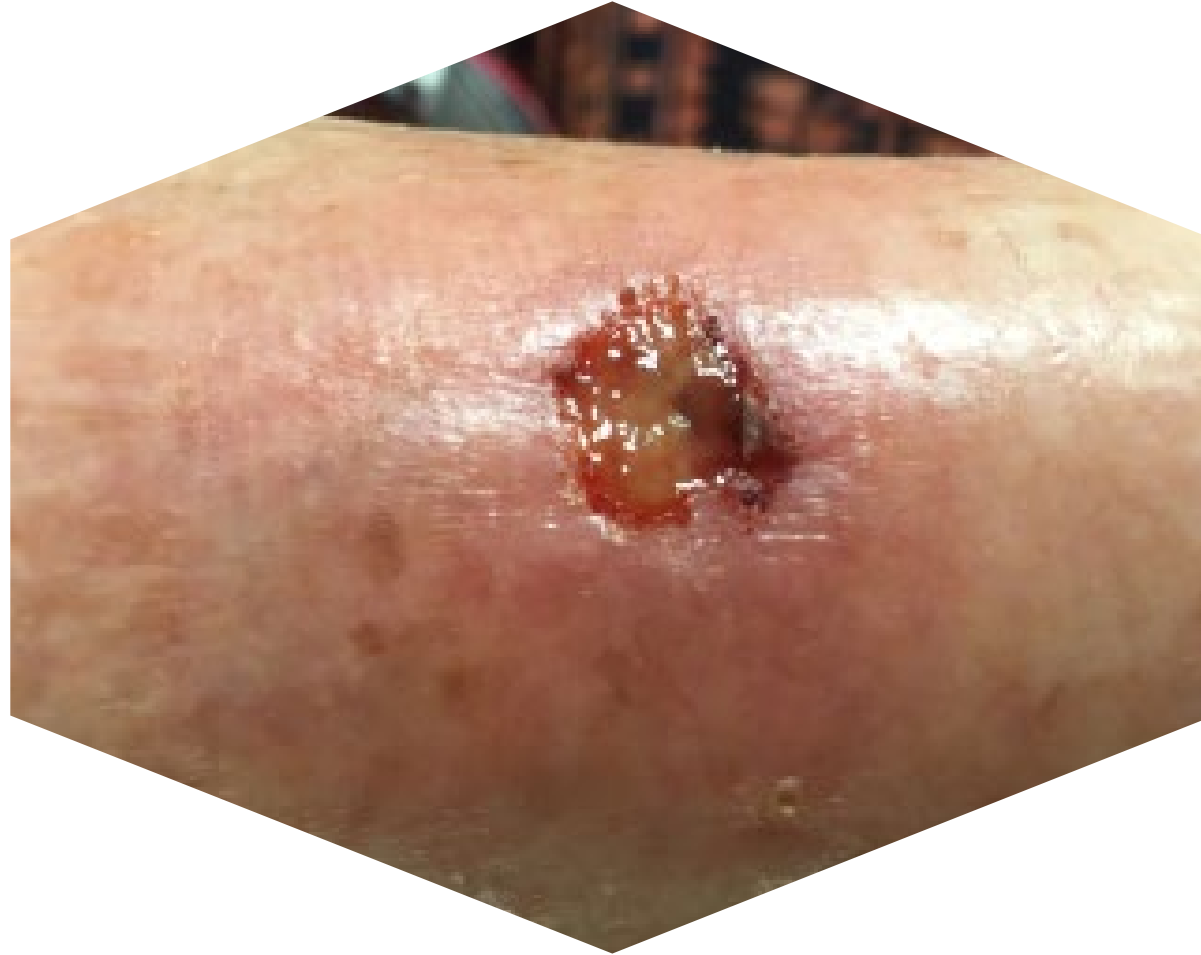


WOUND CARE TODAY



People.Health.Care.

***HOW MUCH EASIER IS IT FOR YOU TO TREAT  
PATIENTS IF THEIR WOUND LOOKS LIKE THIS?***



WOUND CARE TODAY



People.Health.Care.

**What can we  
do to make a  
difference?**



WOUND CARE TODAY



People.Health.Care.



# What can we do to make a difference?

- 1 From tomorrow, assess new leg ulcer patients early



# ***THREE FUNDAMENTALS OF CARE OUTCOMES***



WOUND CARE TODAY



People.Health.Care.

The background of the slide is a light blue color with a pattern of darker blue hearts and hands. The hearts are of various sizes, and the hands are shown in a gesture of giving or receiving. The entire slide is framed by a blue border with a white dotted pattern.

# 2 Treat

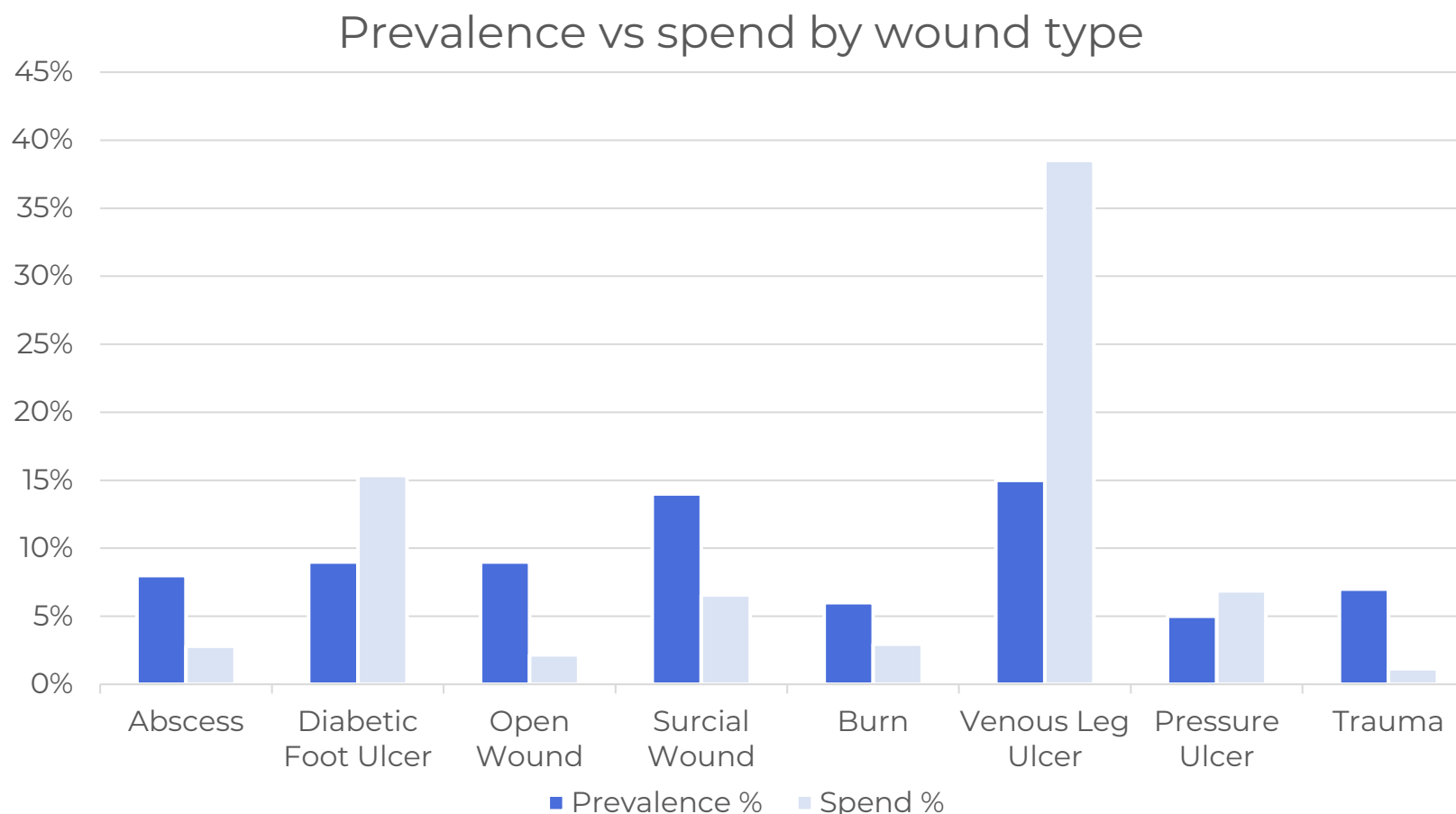


WOUND CARE TODAY



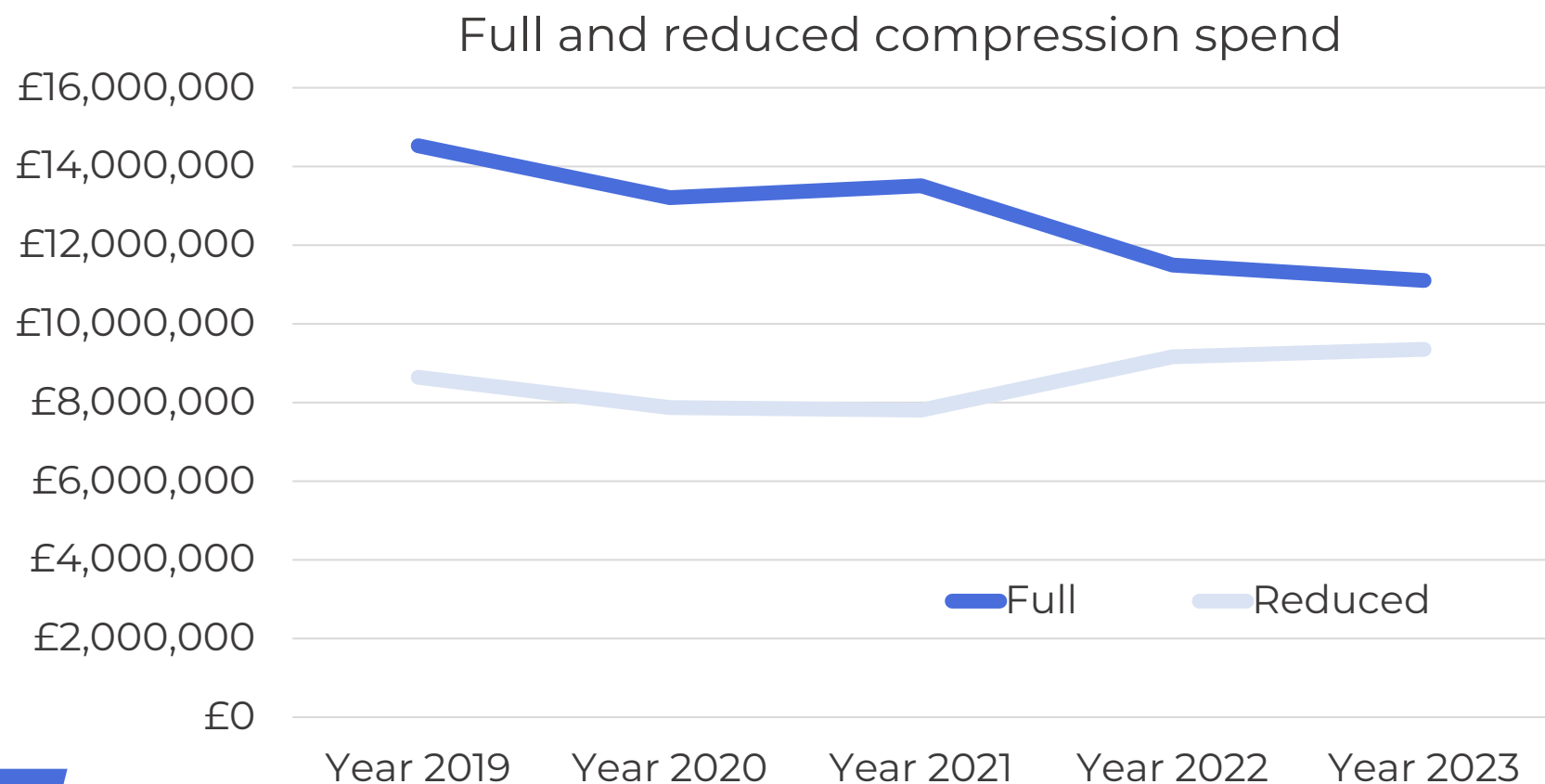
People.Health.Care.

# £3.1 BILLION REASONS WHY





# TREAT VENOUS LEG ULCER PATIENTS WITH STRONG COMPRESSION TO REDUCE WASTE IN UNDER COMPRESSIONING



# REDUCE PRODUCT WASTE BY REVIEWING PATIENTS' TREATMENT



Bandage waste for one patient  
– 24 weeks of treatment



ReadyWrap waste for one patient  
– 24 weeks of treatment

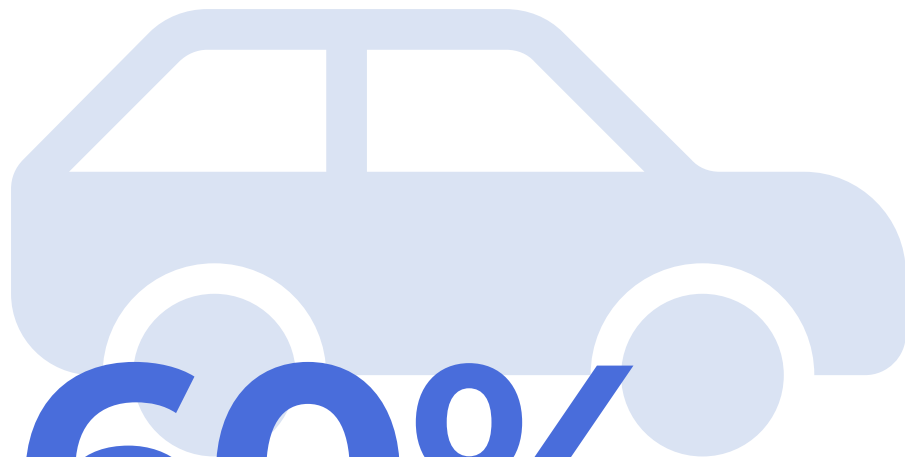


WOUND CARE TODAY



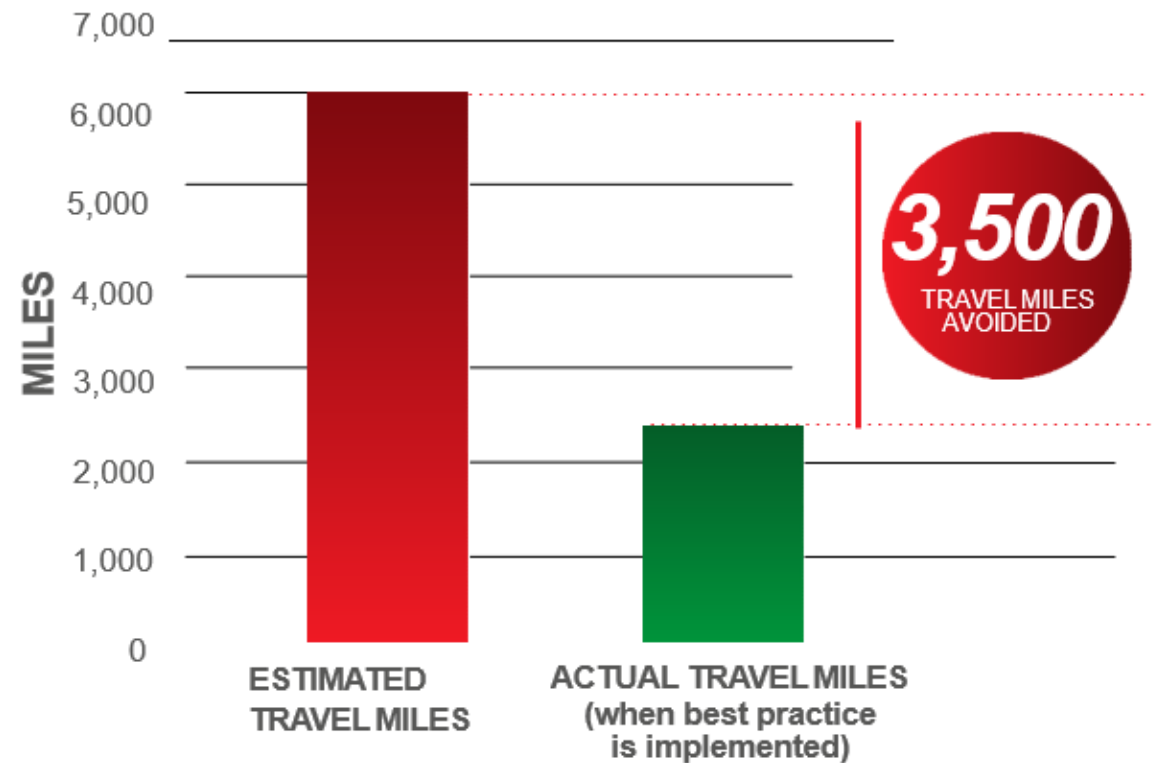
People.Health.Care.

# REDUCE THE ENVIRONMENTAL WASTE



**60%**

reduction in miles driven



WOUND CARE TODAY



People.Health.Care.

The background of the slide features a repeating pattern of stylized hands in various shades of blue, some reaching out and others cupped. Interspersed among the hands are heart shapes of different sizes and shades of blue. The entire design is set against a white background with a fine, light blue dotted pattern.

**What can we  
do to make a  
difference?**



WOUND CARE TODAY



PeopleHealthCare.



# What can we do to make a difference?

- 1 Acknowledge the harm through sub-therapeutic compressing
- 2 Ensure proven practice EVERY time
- 3 THINK about suitability



# ***THREE FUNDAMENTALS OF CARE OUTCOMES***



WOUND CARE TODAY



People.Health.Care.

The background of the slide features a repeating pattern of stylized hands and hearts in various shades of blue and purple. The hands are depicted in an open, supportive gesture, and the hearts are of different sizes. The entire graphic is set against a white background with a subtle grid of small dots.

# **3 Empower**



WOUND CARE TODAY



People.Health.Care.

# EMPOWER SELF-CARE TO REDUCE THE WASTE

## Myth:

Venous ulceration management should be conducted by the clinical team only.



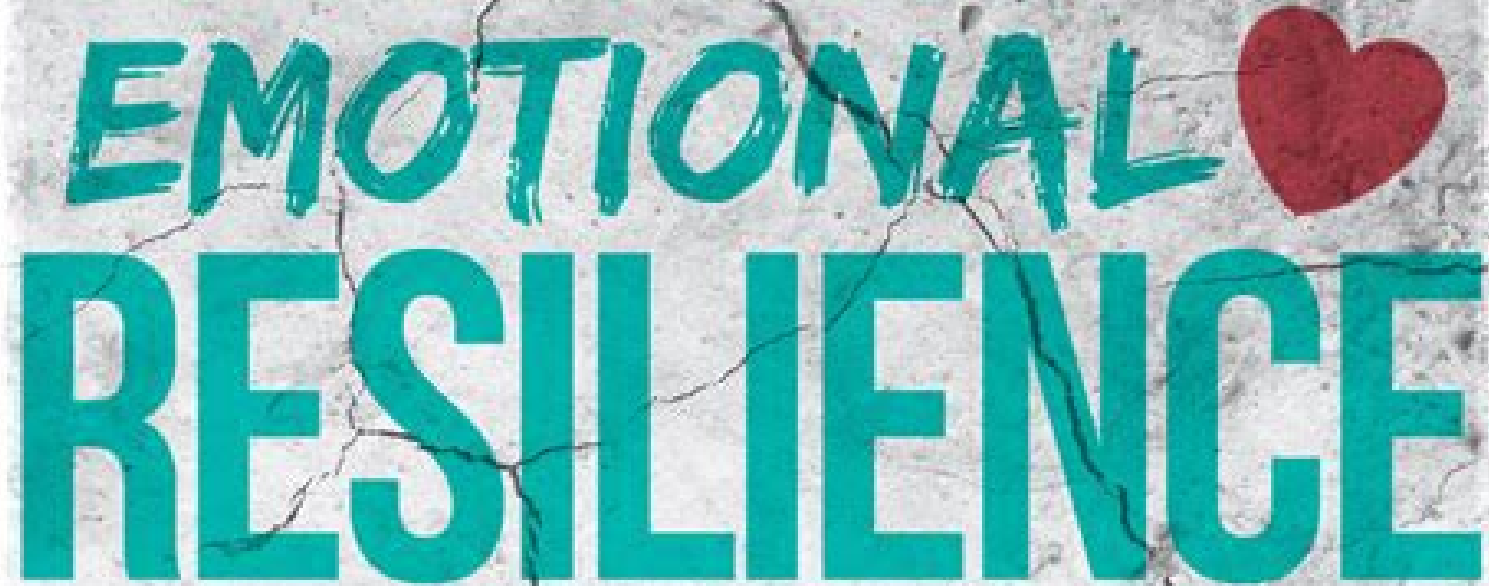
## Truth:

Some patients are able to engage in their own care and help promote a continuity of care between services. Patients, carers or willing family may require tools or support to do so.





# ***WASTE OF YOUR EMOTIONAL RESILIENCE***



**EMOTIONAL  
RESILIENCE**



WOUND CARE TODAY



People.Health.Care.

The background of the slide features a repeating pattern of stylized, light blue hands reaching out and holding various sizes of hearts. The hands and hearts are semi-transparent, creating a layered effect. The entire slide is framed by a blue border with a white dotted pattern.

# What can we do to make a difference?



WOUND CARE TODAY



People.Health.Care.

# What can we do to make a difference?

- 1 Reframing empowerment
- 2 Empowerment of patients
- 3 Empowerment of staff
- 4 Understanding how our behaviour impacts our emotional resilience



# ***THREE FUNDAMENTALS OF CARE OUTCOMES***



WOUND CARE TODAY



People.Health.Care.

# Recap and reflect on your practice



WOUND CARE TODAY



People.Health.Care.





**All behaviour  
is a choice**



WOUND CARE TODAY



People.Health.Care.

# **1** Level of commitment



WOUND CARE TODAY



People.Health.Care.

The background of the slide features a pattern of light blue clouds and gears. The gears are white with blue outlines, and the clouds are in various shades of blue. The entire slide is framed by a blue border with a white dotted pattern.

**2**

# Accountability



WOUND CARE TODAY



People.Health.Care.



3

# Size of the problem



WOUND CARE TODAY



People.Health.Care.

# 21 days to build a HABIT



WOUND CARE TODAY



People.Health.Care.



# ***THREE FUNDAMENTALS OF CARE OUTCOMES***



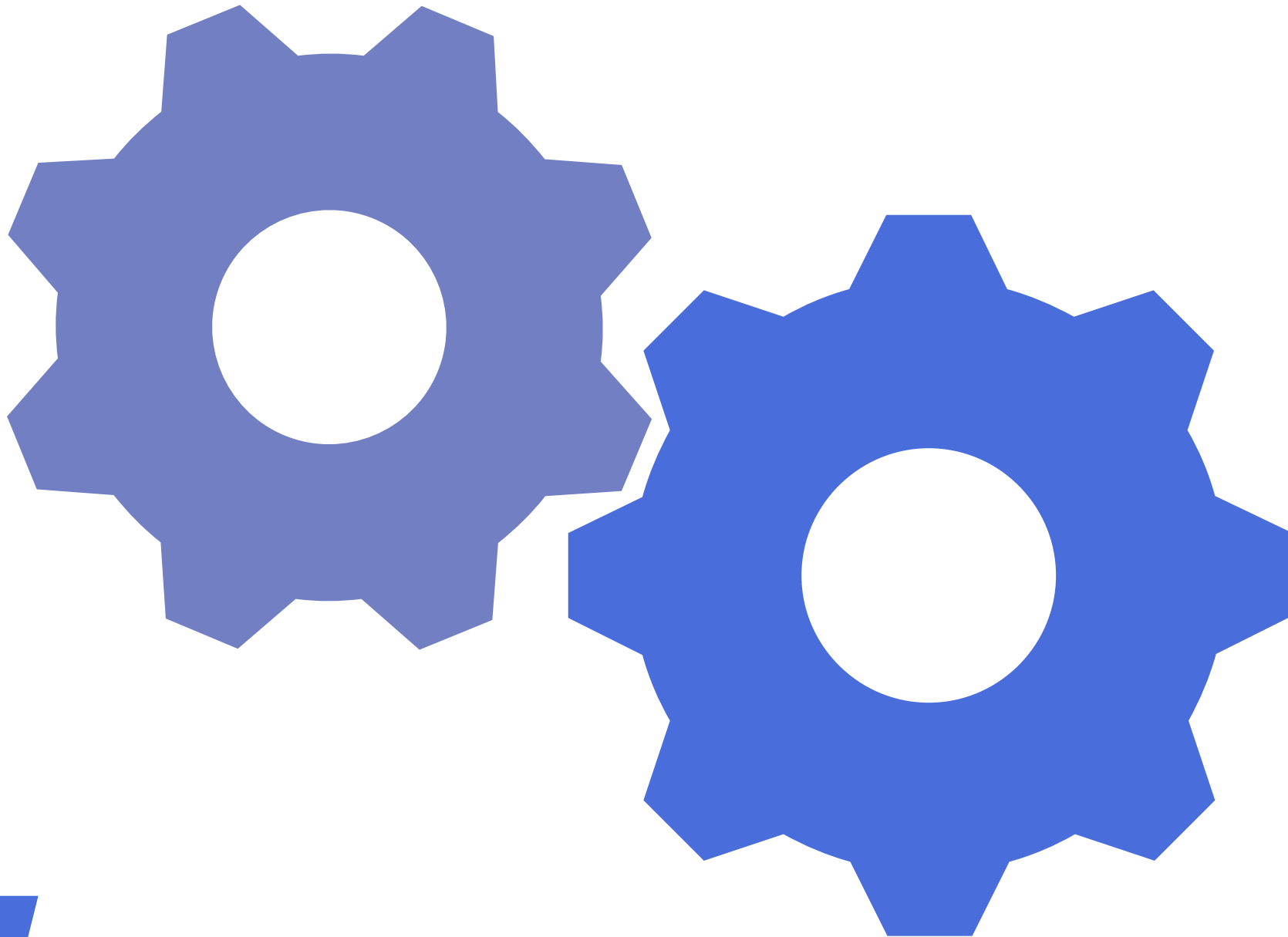
WOUND CARE TODAY



People.Health.Care.

# ***THREE FUNDAMENTALS OF CARE OUTCOMES***





WOUND CARE TODAY



People.Health.Care.

# CALL TO ACTION

Learn more about providing evidenced based best practice for the treatment of venous leg ulcers:

<https://lohmann-rauscher.co.uk/bps>



WOUND CARE TODAY



People.Health.Care.



# DOWNLOAD YOUR CERTIFICATE

[WCT-LIVE.CO.UK/CERTIFICATE](https://wct-live.co.uk/certificate)





# Wound Care Today 2025

---

TELFORD

12-13 MARCH

**Registrations are now open**